



❄️ Festive greetings from the MD ❄️

I₂L wishes all of you a Merry Christmas and a very happy New Year.



We have had another successful year, with lots of new clients and strong growth in our core business. Our GLP Ecotoxicology unit has shown particularly strong growth and deserves a special mention for doubling its turnover in 2004. Some of you may have noticed that I have been very active in my travels this autumn, and that we took a stand at the Glasgow BCPC meeting for the very first time. This has all been part of a concerted marketing push. The result

of this has been a significant increase in new business, as well as helping with securing those all important repeat contracts. I have greatly enjoyed the opportunity of making so many face to face contacts this year and certainly plan to get out on the road again in the New Year. You will notice from this edition of the newsletter, that we are launching a new herbicides service with immediate effect - please contact **Dr Graham Small** (graham@insect-investigations.com) for more information and to discuss your testing requirements. I₂L anticipates a very busy spring season and further growth in our business in 2005. This happy state of affairs results from excellent staff, high quality work and your continued support. Thank you for working with us - we never lose sight of the importance of our customers.

I₂L at BCPC Glasgow...



As part of our strategy to publicise I₂L's services more widely and to raise the company's profile within the pest control industry, I₂L for the first time had a stand at the annual BCPC Exhibition in Glasgow during November. Our presence at the exhibition attracted a great deal of interest and many new business contacts were made, both at the stand and at the company suites dotted around the nearby hotels. A photo of the I₂L stand can be seen left.

... and further afield!

Never one to rest on his laurels, Peter also managed to make time during October to visit Japan and then PestWorld 2004 in Hawaii to promote I₂L and its services - tough work but someone's got to do it!

All our trips proved extremely successful and we are now being kept very busy following up on all our new contacts.

Herbicide testing at I₂L

As you will know by now, I₂L is a company that never stands still. During 2004, we have been working on the addition of several new services to the company's portfolio.

I₂L is now pleased to announce the launch of our **herbicide testing service**. Studies we can offer as glasshouse or small scale field trials include:

- 🌀 Herbicide efficacy testing
- 🌀 Phytotoxicity and yield assessments
- 🌀 Effects on succeeding crops
- 🌀 Effects on adjacent crops
- 🌀 Tests of tank-cleaning methods
- 🌀 Rainfastness studies
- 🌀 Effect on beneficial organisms

For further details on this new service, please contact **Graham Small**, graham@insect-investigations.com

IN THIS ISSUE

FESTIVE GREETINGS FROM THE MD

I₂L AT BCPC GLASGOW...

...AND FURTHER AFIELD

HERBICIDE TESTING AT I₂L

PESTICIDE RESISTANCE MONITORING

GLP ECOTOXICOLOGY

PESTS IN THE NEWS

SLUGS, SLUGS AND MORE SLUGS



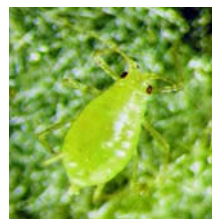
..Rapid
Responsive
Reliable

Insect Investigations Ltd,
Capital Business Park, Wentloog,
Cardiff CF3 2PX
Tel: 0044 (0)29 20837450

www.insect-investigations.com

Pesticide Resistance Monitoring

Pesticides play an important role in the control of many pests of agricultural, veterinary and public health importance. Development of resistance to these pesticides leads to problems with their use in pest control and limits available options for control. Despite limited monitoring in the past, the selection of pesticide resistance, including the selection of multiple resistance covering several pesticide classes, has been reported in many economically and medically important pests.



Knowledge of pesticide resistance status in target pest populations, and of the operational implications arising from changes in resistance status, should be basic requirements to guide pesticide usage in any pest control programme. Resistance monitoring provides the basis for selecting pesticides that will be both effective in controlling pests and that will also assist in pesticide resistance management. Through **CARMS**, the Cardiff Resistance Monitoring Service, **I₂L** can assist everyone in the pest control industry, from manufacturers through to end-users, by monitoring the effectiveness of crop protection and biocide products, and by offering impartial advice on pesticide resistance management. For further details on this service, please contact **Graham Small**, graham@insect-investigations.com

GLP Ecotoxicology

Congratulations are due to **I₂L**'s GLP Ecotoxicology Unit which has doubled its contract income during 2004. The GLP team, headed by Nigel Halsall, an internationally respected expert in terrestrial ecotoxicology, has expanded during the year and further staff recruitment is planned for 2005.



With its combined experience of 15 years in the field, the unit can now offer the full range of studies required for regulatory submission.

Having added *Aleochara bilineata*, *Pardosa* species and honey bee testing to our portfolio in 2004, plans are now in place for soil organism testing and litter bag studies during 2005. Through its membership of the SETAC-affiliated working group DOTTS (Dung Organism Toxicity Test Standardisation), **I₂L** will also be involved in developing methods to study the effect of parasiticides used in veterinary medicine on dung fauna.

For further information on our GLP Ecotoxicology Unit, please contact **Nigel Halsall**, nigel@insect-investigations.com

Pests in the news

Having hit the headlines in 1999 when it first appeared in the United States, the mosquito-borne disease West Nile Virus (WNV) has continued to make the news on both sides of the Atlantic. In that year there were 62 cases and 7 deaths due to West Nile Fever in New York City. Since then the virus has spread across much of the country and 9,862 cases with 264 deaths were reported during 2003.



In Europe, Russia has experienced the greatest impact from WNV outbreaks, with 318 cases and 40 deaths reported in 1999. Fortunately, the number of cases in Russia have dropped off in recent years but cases of WNV have now been reported in humans and horses in other European countries. In 2000, France saw 76 cases in horses with 21 fatalities and 2003 saw the first reports of human cases (2 cases but no deaths). This year two cases of WNV infection have been confirmed in Ireland. However, in both instances the patients had recently visited the Algarve in Portugal and it appears likely, therefore, that they contracted WNV whilst on vacation.

Although WNV has been found in more than 20 species of birds in the UK, no human cases have yet been reported. However, the clear threat posed by WNV to the UK public has this year prompted the Department of Health (DoH) to draw up a strategy for dealing with any outbreak of the virus. This strategy sets out measures to enhance surveillance for the virus, to alert clinicians to the symptoms of West Nile fever and to control mosquito populations.

Further information on the UK DoH's strategy to combat the threat of WNV can be found at: www.dh.gov.uk/AboutUs/HeadsOfProfession/ChiefMedicalOfficer/fs/en. For more general information on WNV, including important advice on mosquito bite prevention, please visit the resource maintained by the Division of Vector-Borne Infectious Diseases, CDC: www.cdc.gov/ncidod/dvbid/westnile/index.htm.

Slugs, slugs, and more slugs!

Compared to the tropics, where huge areas of crops can be devastated by the attack of pests - such as is right now happening with locusts in Africa - Britain has relatively few serious plant pests to contend with. However, we do have one particular pest which is the bane of gardeners and farmers alike - the slug! Britain can rightly claim to be the slug capital of the world. Nowhere else can you find such ideal conditions for slugs - cool damp summers and warmish, wet winters allow slugs to breed and feed throughout much of the year.

Catherine Whaley and Andy McKemey at **I₂L** have been assisting companies for many years in the development and testing of molluscicides, slug attractants and slug repellents to control these gastropod pests. Using their unique expertise, they offer a wide range of studies under laboratory, semi-field (caged arena) and field conditions. All trials are performed to GEP in accordance with the relevant Eppo and PSD efficacy guidelines. If you'd like to know more about the services offered by **I₂L** for mollusc studies, please e-mail Catherine, catherine@insect-investigations.com

I₂L Express Editor & Designer:
Graham Small

Further information on the services mentioned in this newsletter, and on all our other services, can be obtained from our website: www.insect-investigations.com

You can contact us at: *Insect Investigations Ltd*, Capital Business Park, Wentloog, Cardiff CF3 2PX
Tel: 0044 (0)29 20837450
Fax: 0044 (0)29 20837451
Email: peter@insect-investigations.com